

Basic Skills

AB705.



Stephanie K. Lewis, Ph.D.

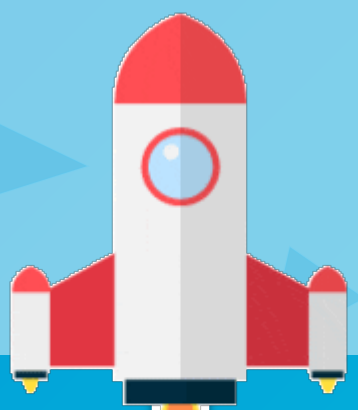
Dean, Mathematics, Business & Computer Technology
San Bernardino Valley College

slewis@valleycollege.edu

(909) 384-8534



The Basics...



01

What is AB 705?

02

How is SBVC responding to AB 705 in Math?

03

Placement rules (Guided and/or Self-placement)

04

Learning & Success within transfer-level classes
Support for Faculty and Students

What is AB 705?

Assembly Bill (AB) 705 was unanimously passed by the legislature and signed into law by Governor Brown in October, 2017, and took effect on January 2018.

AB 705...

- Prohibits CCC's from using any testing instrument for placement
- Mandates that multiple measures (i.e. self reported GPA, course taking history) be used for course placement
- Requires CCC's to maximize the probability that an entering student will complete transfer level math and English within a 1 year timeframe.
- Prohibits CCC's from requiring students to enroll in English/math remediation that will lengthen their time to complete a degree unless placement research shows that those students are highly unlikely to succeed
- Intent is to ensure that students are not under-placed and that their probability of success is maximized



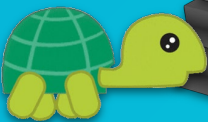
BLASTOFF!

AB705 mandates that a first-year student complete transfer-level English and math first

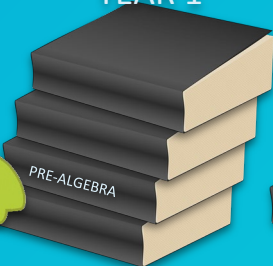


COMPLIANCE

AB705 requires all California community colleges to be compliant by fall 2019



YEAR 1



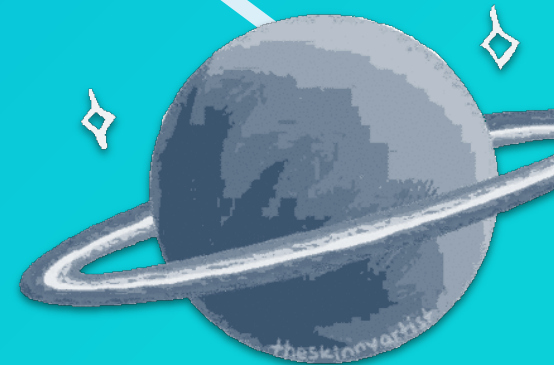
YEAR 2



YEAR 3



YEAR 4



How is SBVC responding?

Developmental Math Enrollment (900s)	Section Count	Enrollment Count
Fall 2018	38	1263
Fall 2019	5	136
Attrition Rate from Fall 2018 to 2019	86.8%	89.2%

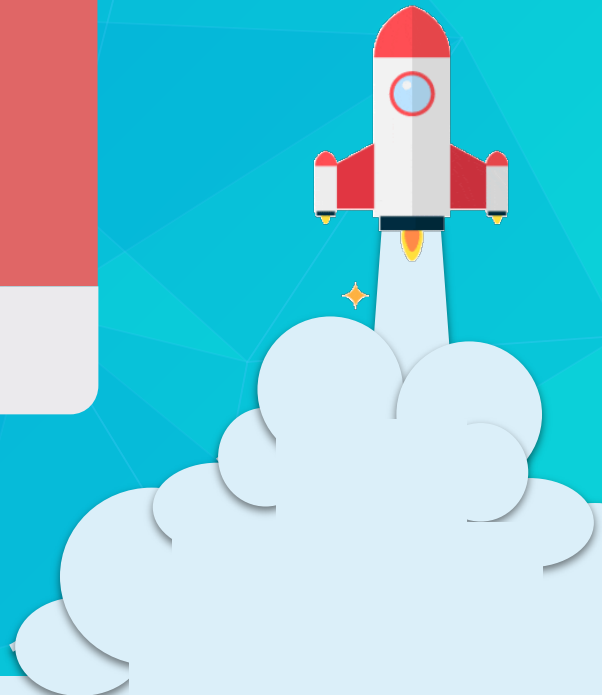
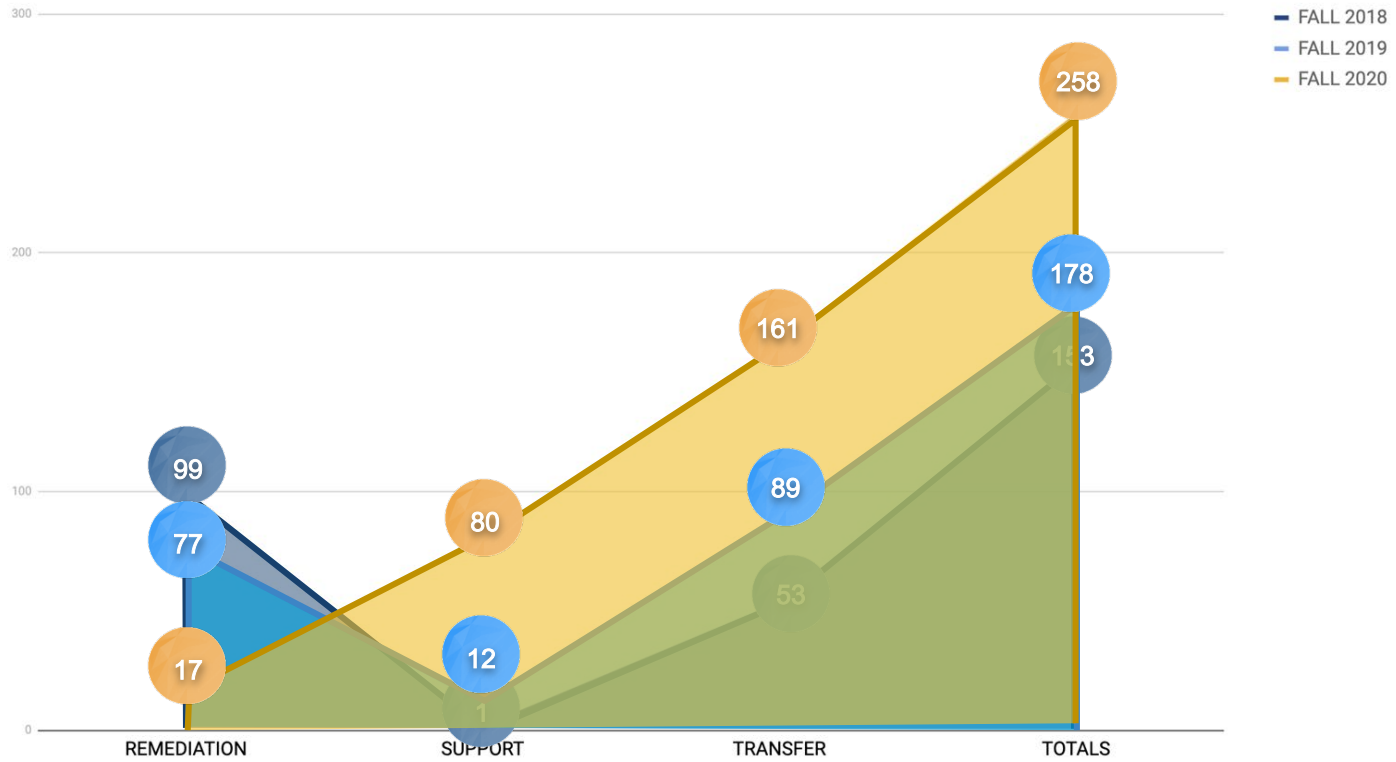
- Minimizing the number of course offerings in Developmental Math (Arithmetic & Pre -Algebra)
- Shifting Course Enrollments
- Increasing Student Support



SBVC Institutional Research Dept.

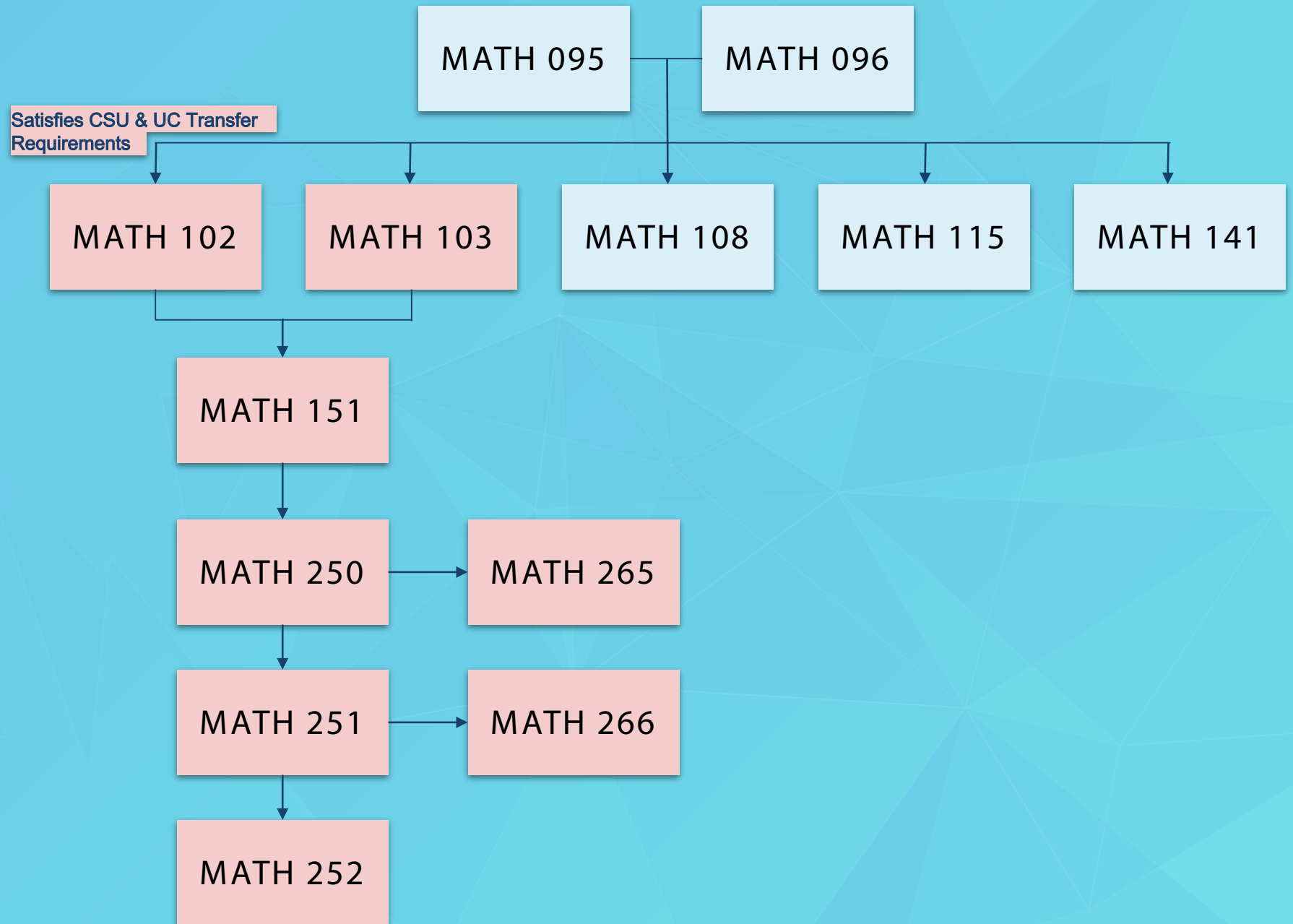
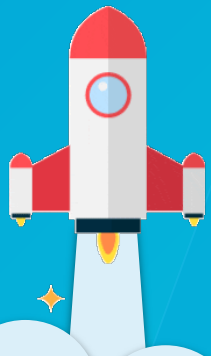


Shifting Course Offerings



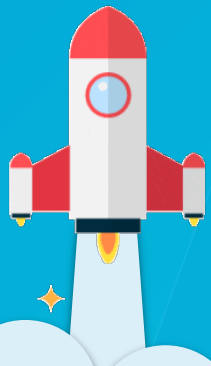
STEM TRACK MATH FLOW CHART

If your GPA is greater than 2.6, then you may directly enroll in Tier 2 classes



DEFAULT PLACEMENT

for Stats / Liberal Arts
Math



HSGPA

> 3.0

No additional academic or
concurrent support required

2.3 -
2.9

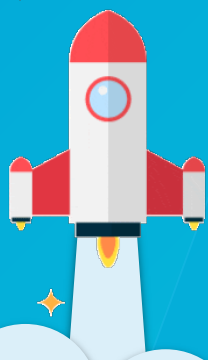
Additional academic or concurrent
support recommended

< 2.3

Academic or concurrent support strongly
recommended

DEFAULT PLACEMENT

for BSTEM Math



HSGPA

> 3.4

> 2.6

& enrolled in HS
Calculus course

No additional academic or
concurrent support
required

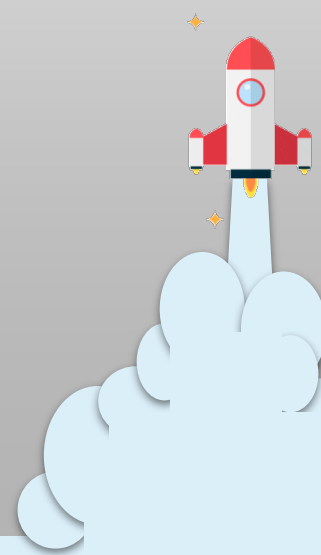
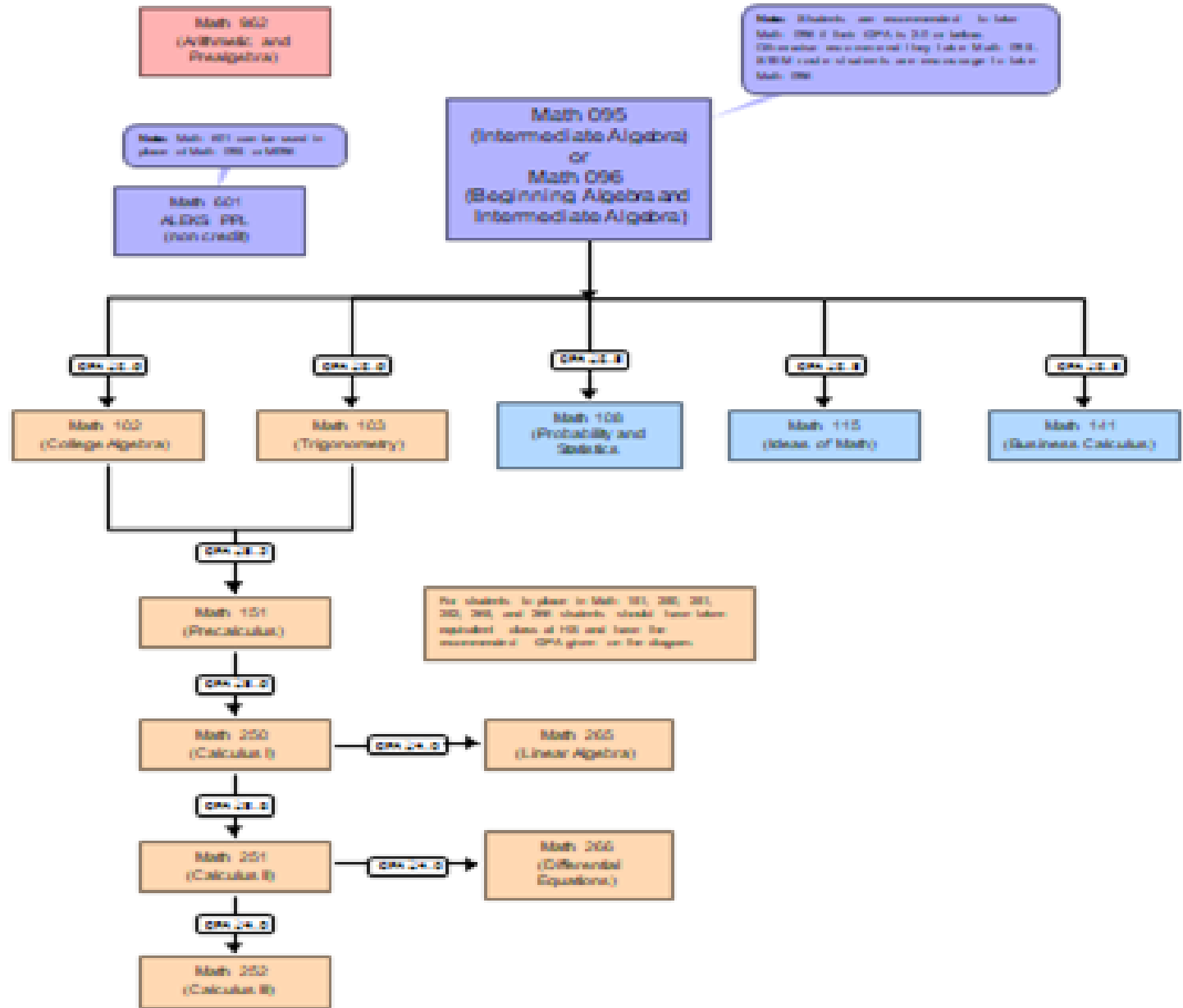
> 2.6

& enrolled in HS
Precalculus course

Additional academic or
concurrent support
recommended

< 2.6

Academic or concurrent
support strongly recommended



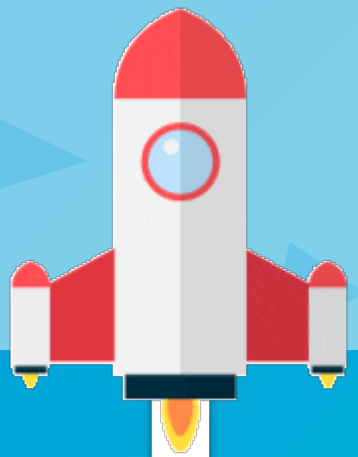


Math Enrollment - Fall 2019

Course	Enrollment Count	Avg. Course Retention	Avg. Fill Rate
102-601_Linked (Sections=5)	177	82.5%	90.8%
102-StandAlone (Sections=21)	794	71.9%	83.2%
601-LinkedtoAnyMath (Sections=7*)	231	85.3%	89.2%
108 (33 sections)	997	80.5%	92.3%

*Includes 102-601 Linked Sections

The Basics...



05

Co-requisite/concurrent support models

06

Data Collection & Evaluation to inform practice

QUESTIONS? ¿PREGUNTAS?



Stephanie K. Lewis, Ph.D.

Dean, Mathematics, Business & Computer Technology
San Bernardino Valley College

slewis@valleycollege.edu

(909) 384-8534

